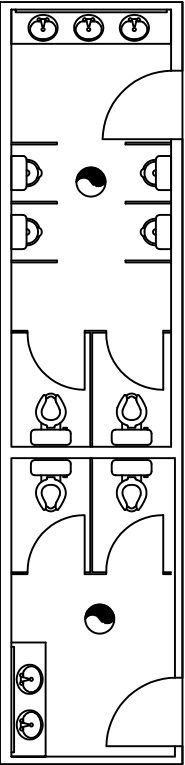


A/C UNIT SCHEDULE								
NO.	TOTAL BTU	CFM	O.A.	HEAT (KW)	ELECTRICAL			COMMENTS
					VOLTAGE	MCA	CKT BRKR	
1	90,000 7.5 TON	3000	956	10	208V,3ø	-	-	CARRIER
2	48,000 3 TON	1200	140	10	208V,3ø	-	-	CARRIER
2	48,000 4 TON	1600	140	10	208V,3ø	-	-	CARRIER

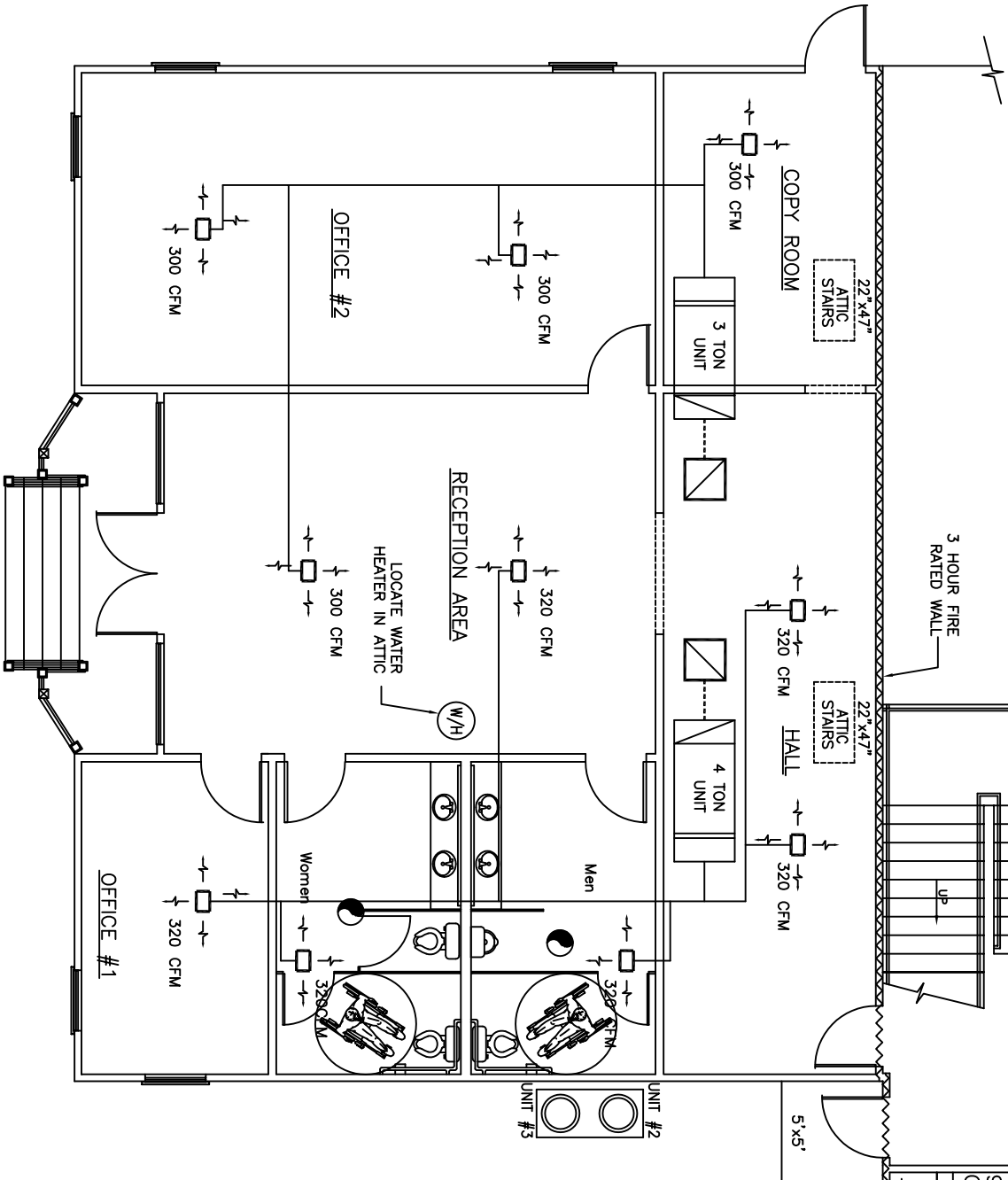
EXHAUST FAN SCHEDULE						
LOCATION	CFM	VOLTAGE	TYPE	MANF.		
MENS (WAREHOUSE)	450	120	VENT	BROAN		
MENS (OFFICE)	150	120	VENT	BROAN		
WOMENS (WAREHOUSE)	150	120	VENT	BROAN		
WOMENS (OFFICE)	150	120	VENT	BROAN		



VENT LAYOUT (BATHROOMS)

SCALE: 1/4"=1'-0"

NOTE: CONTRACTOR / OWNER TO VERIFY EQUIPMENT, UTILITY TIE-INS, AND ELECTRICAL LOCATIONS PRIOR TO START OF CONSTRUCTION.



MECHANICAL PLAN

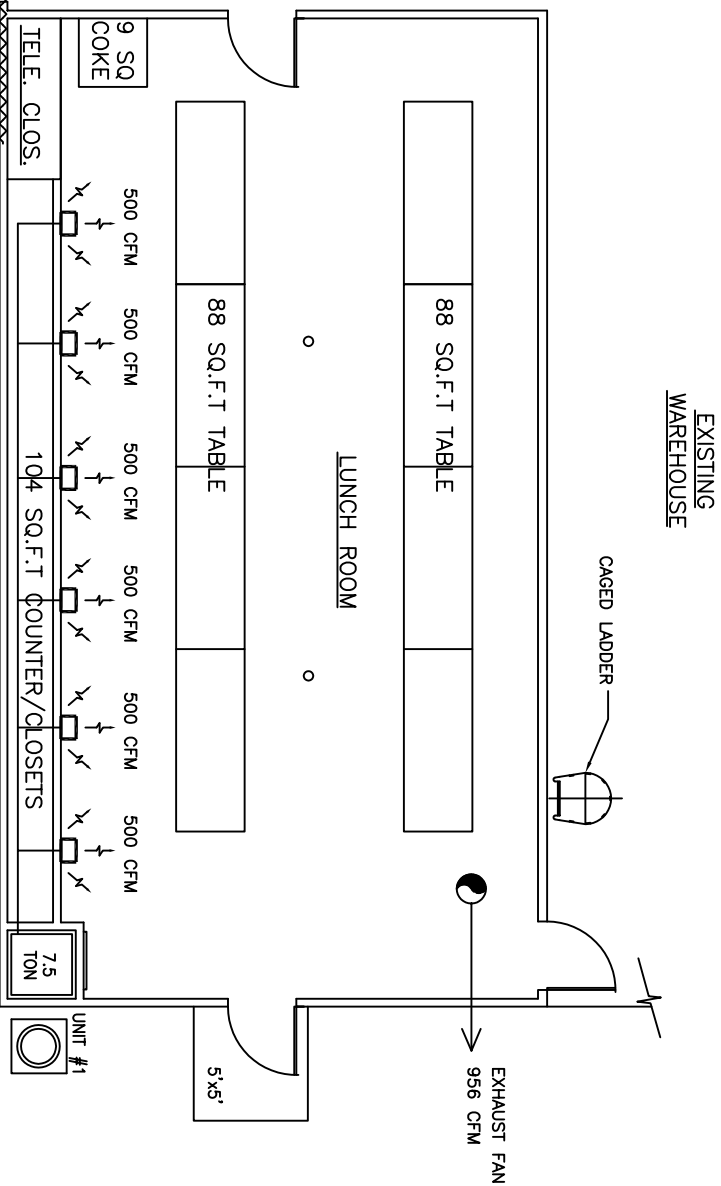
SCALE: 1/4"=1'-0"

972 TOTAL SQ. F.T

289 TOTAL SQ. F.T FOR TABLES/COUNTER/CLOSETS

683 TOTAL SQ.F.T FOR OUTDOOR FRESH AIR

683 DIVIDED BY 1000 x 70 = 47 PEOPLE 47 PEOPLE MULTIPLIED X 20 = 956 CFM



HVAC NOTES

1. CONCEALED DUCTWORK TO BE UL-181, CLASS I, FIBERGLASS DUCTBOARD. DUCTS SHALL BE SIZED TO LIMIT MAIN DUCTS TO 1000 CFM & SECONDARY DUCTS TO 600 CFM. TO BE INSTALLED PER SMACNA STANDARDS.
2. EXPOSED DUCTWORK TO BE GALVANIZED SHEET METAL PER SMACNA STANDARDS. LINE WITH NEOPRENE COATED 1.0", 1.5 POUNDS PER CUBIC FOOT DUCT INSULATION.
3. ROUND FLEXIBLE DUCT TO BE UL-181, CLASS I, AIR DUCT MATERIALS.
4. DUCT SIZES SHOWN ARE CLEAR INSIDE DIMENSIONS.
5. IN ALL SYSTEMS OVER 2000 CFM AND LESS THAN 1,500 CFM, SMOKE DETECTORS SHALL BE INSTALLED IN ACCORDANCE WITH NFPA 72E IN THE RETURN DUCT DOWNSTREAM OF THE AIR HANDLING UNIT AND ALL FILTERS, TO AUTOMATICALLY STOP THE FAN.
6. PROVIDE U.L. LISTED 125 F FIRESHOT IN RETURN AIR OF EACH SYSTEM UNDER 2000 CFM TO SHUT DOWN FAN IN THE EVENT OF FIRE.
7. PROVIDE U.L. RATED FIRE DAMPERS WHERE REQUIRED AT ALL DUCT PENETRATIONS OF FIRE-RATED ASSEMBLIES AND WHERE REQUIRED BY CODE, INCLUDING OUTSIDE AIR INTAKES.
8. CONDENSATE DRAINS TO BE PVC PIPE RUN TO PLUMBERS P-TRAP WITHIN FIVE FEET OF AIR HANDLING UNITS.
9. ALL AIR HANDLING SYSTEMS TO BE BALANCED TO ASSURE PROPER AIR FLOWS PER PLANS.
10. ALL THERMOSTATS TO BE AUTOMATIC CHANGEOVER WITH HEAT SYSTEM.
11. EXHAUST FAN EQUAL TO BROAN MODEL NO. 100 CF OR EQUAL. FAN SHALL BE CONTROLLED BY SWITCH ON WALL AT LIGHT SWITCH. PROVIDE BACK DRAFT DAMPER.
12. PROVIDE AND INSTALL WATERPROOF GRILLE VENT ON ROOF FOR TOILET EXHAUST.
13. ALL SUPPLY AIR VENTS SHALL BE EQUIPPED WITH AIR CONTROL DAMPERS.
14. LOCATION OF OUTDOOR UNITS SHALL BE AS SHOWN ON PLAN. MECHANICAL CONTRACTOR SHALL PROVIDE A 4" CONCRETE REINFORCED PAD FOR EACH CONDENSING UNIT.
15. REFRIGERANT LINES SHALL BE SIZED BY UNIT MANUFACTURER AND INSTALLED ACCORDING TO MANUFACTURERS INSTRUCTIONS.
16. FRESH AIR SHALL BE SUPPLIED TO EACH AIR HANDLER THROUGH ROOF TOP DUCT SUPPLIED WITH A CONTROL DAMPER.
17. INSTALL FIRE DAMPER WHERE S.A. & R.A. DUCTS PENETRATE 1 HR. CEILING.
18. ALL ELECTRICAL, MECHANICAL & PLUMBING PENETRATING FIRE WALLS SHALL BE FIRE CAULKED. (PENETRATIONS THROUGH RATED CONSTRUCTION SHALL BE SEALED WITH A MATERIAL CAPABLE OF PREVENTING THE PASSAGE OF FLAMES AND HOT GASES WHEN TESTED IN ACCORDANCE WITH ASTM-E814.)

LEGEND

- SUPPLY AIR
- RETURN AIR
- SUPPLY AIR
- RETURN AIR
- EXHAUST FAN

MECHANICAL PLAN

TEXTRON MARINE & LAND
2582 FRONT STREET
SLIDELL, LOUISIANA

TEXTRON OFFICE/WAREHOUSE RENOVATION

DAMMON ENGINEERING. INC.
1095 FLORIDA AVENUE 985-649-5832 SLIDELL, LA. 70458
DAMMONENGINEERING.COM

SCALE:AS NOTED

FILE:

JOB NO. 1641

DATE:12-02-04

SHEET

M-1

OF

01/31/05 ADDED SECOND A/C UNIT IN ATTIC SPACE